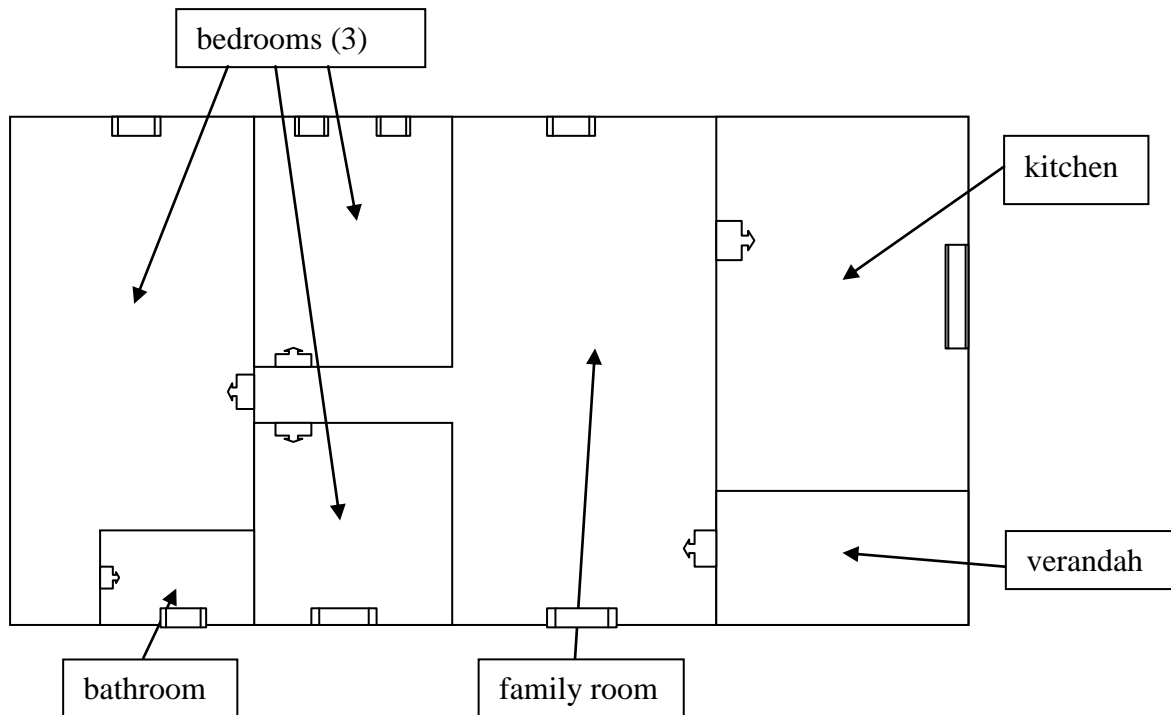


Abeauty's House (not to scale):



Window

Door

Construction materials:

Walls: mud brick

Roof: galvanised iron sheets

Floor: cement

Dimensions of Abeauty's House:

Front verandah: Length: 4.80m Width: 2.15m

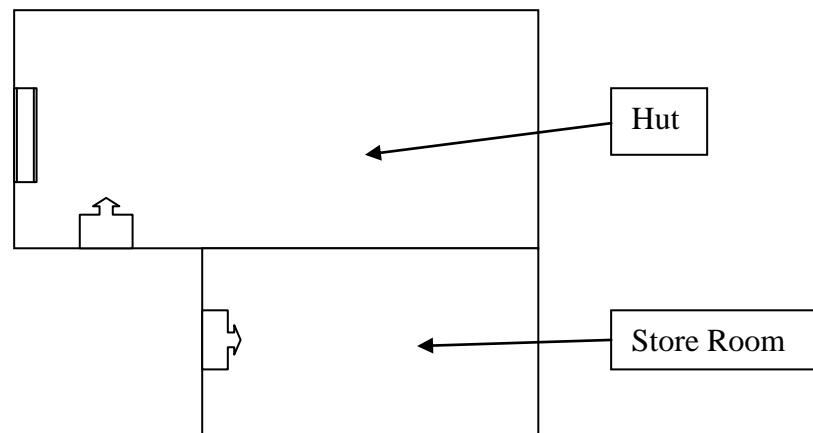
Front wall all rooms combined excluding verandah: Length: 15.20m

Back wall all rooms combined excluding verandah: Length: 20.22m

Side wall left: Length: 8.60m

Side wall right: Length: 8.45m

Worker's Hut and adjacent Store Room (not to scale):



Window 

Door 

Construction materials:

Walls: mud brick

Roof: galvanised iron sheets

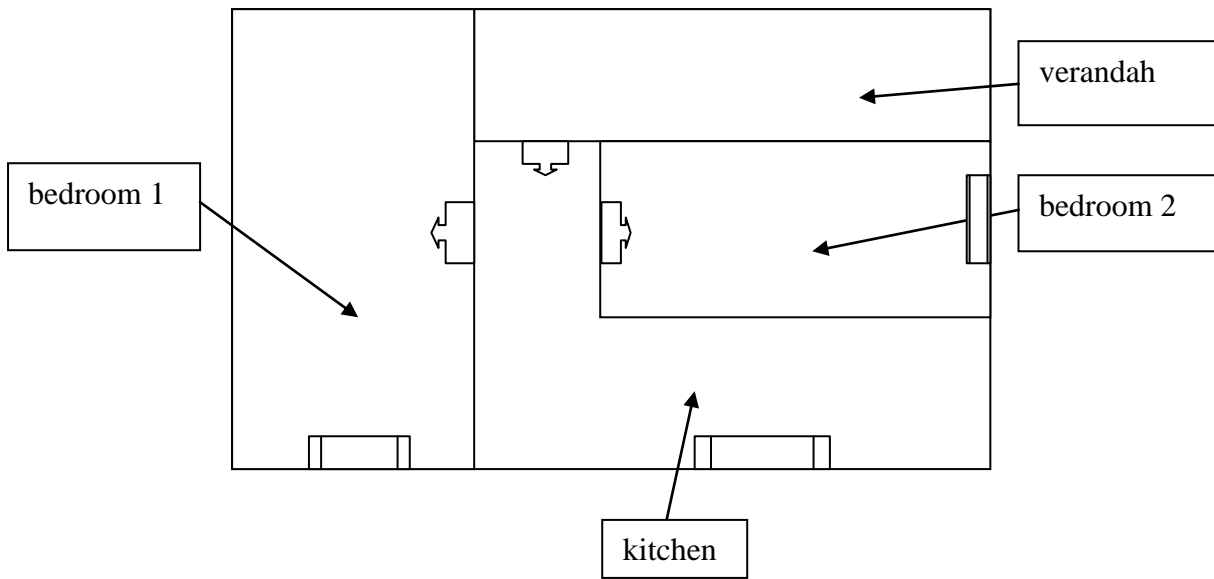
Floor: cement

Dimensions of Worker's Hut and adjacent Store Room:

Hut: Length: 5.56m Width: 3.50m

Store Room: Length: 3.60m Width: 3.00m

Abeauty's old house (not to scale) – currently used for guests:



Window 

Door 

Construction materials:

Walls: mud brick

Roof: galvanised iron sheets

Floor: cement

Dimensions of Abeauty's old house – currently used for guests:

Verandah: Length: 5.50m Width: 1.96m

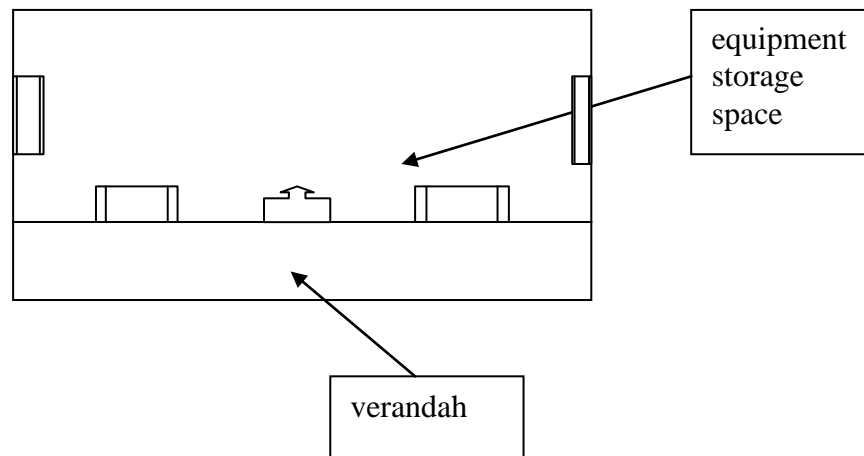
Side wall (right side): Length: 6.80m

Back wall: Length: 9.34m

Side wall (left side): Length: 6.80m

Front wall adjacent to verandah: Length: 3.36m

Tool Shed (not to scale):



Window 

Door 

Construction materials:

Walls: mud brick

Roof: galvanised iron sheets

Floor: cement

Dimensions of Tool Shed:

Verandah: Length: 6.70m Width: 3.30m

Back wall: Length: 6.70m

Side walls left and right excluding verandah: Length: 6.17m

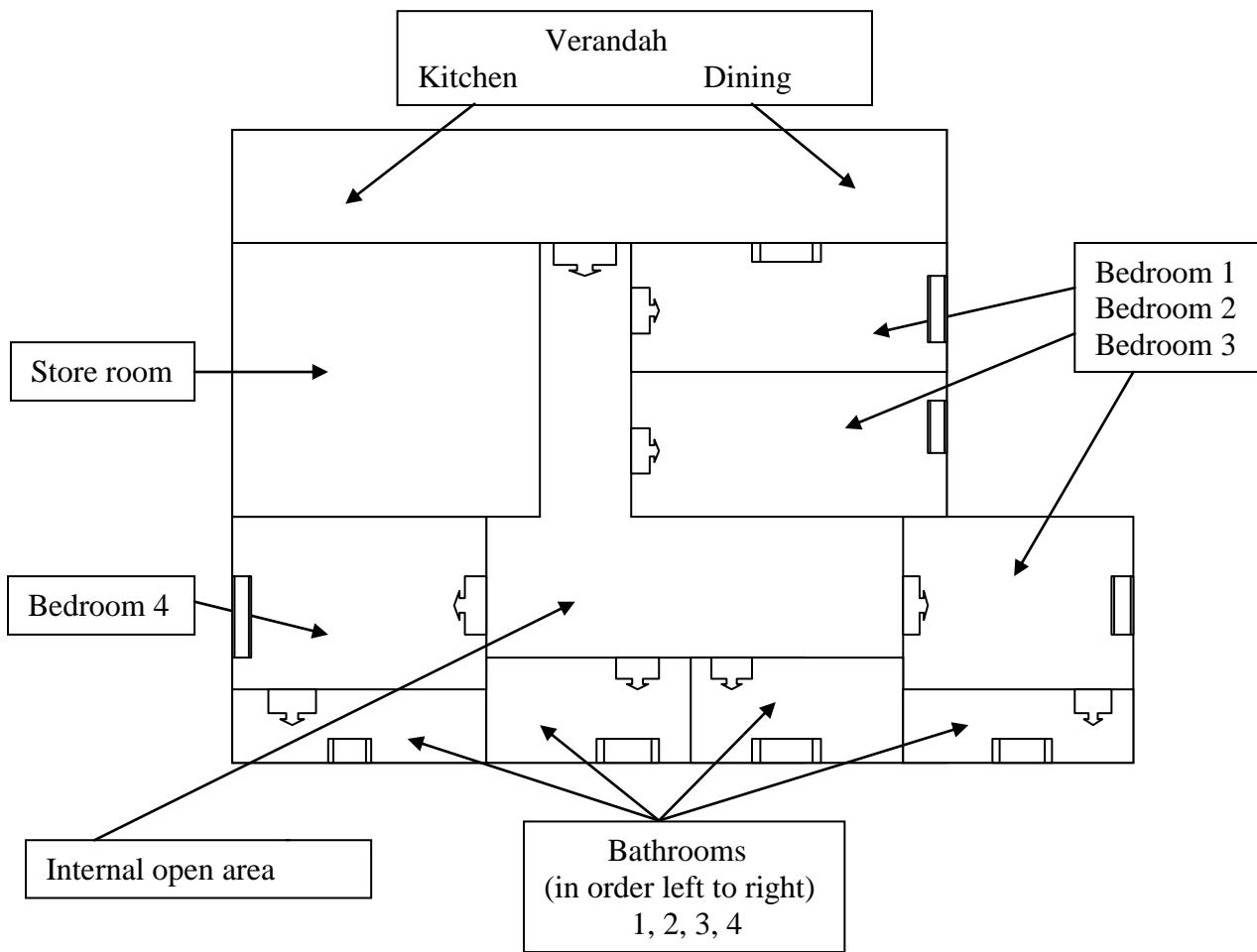
Additional notes:

The tool shed has an external power point, plus one fluoro light on the verandah.

Inside, there are two fluoro lights plus one globe and one light switch.

The windows are covered with security grills; the external door is very secure.

Guest House (not to scale):



- Window**
- Door**

Construction materials:

- Walls: mud brick
- Roof: galvanised iron sheets
- Floor: cement

Dimensions of Guest House:

Verandah (including kitchen and dining area):	Length: 10.02m	Width: 2.26m
Bedroom 1:	Length: 3.25m	Width: 3.25m
Bedroom 2:	Length: 3.25m	Width: 3.40m
Bedroom 3:	Length: 3.00m	Width: 3.40m
Bedroom 4:	Length: 3.52m	Width: 3.00m
Bathroom 1:	Length: 2.75m	Width: 1.95m
Bathroom 2:	Length: 2.57m	Width: 1.87m
Bathroom 3:	Length: 3.03m	Width: 1.87m
Bathroom 4:	Length: 2.72m	Width: 1.93m
Store Room:	Length: 5.00m	Width: 7.30m
Internal open area:	Length: 3.97m	Width: 3.02m

External dimensions:

Verandah length: 10.02m

Right side width (verandah/dining plus bedrooms 1 and 2): 10.08m

Right side width (bedroom 3 plus bathroom 4): 5.37m

Right side length (across bedroom 3): 1.95m

Rear wall length (across bathrooms 1 to 4): 11.75m

Left side width (verandah/kitchen plus store room plus bedroom 4 plus bathroom 1): 15.95m

Additional information about the Guest House:

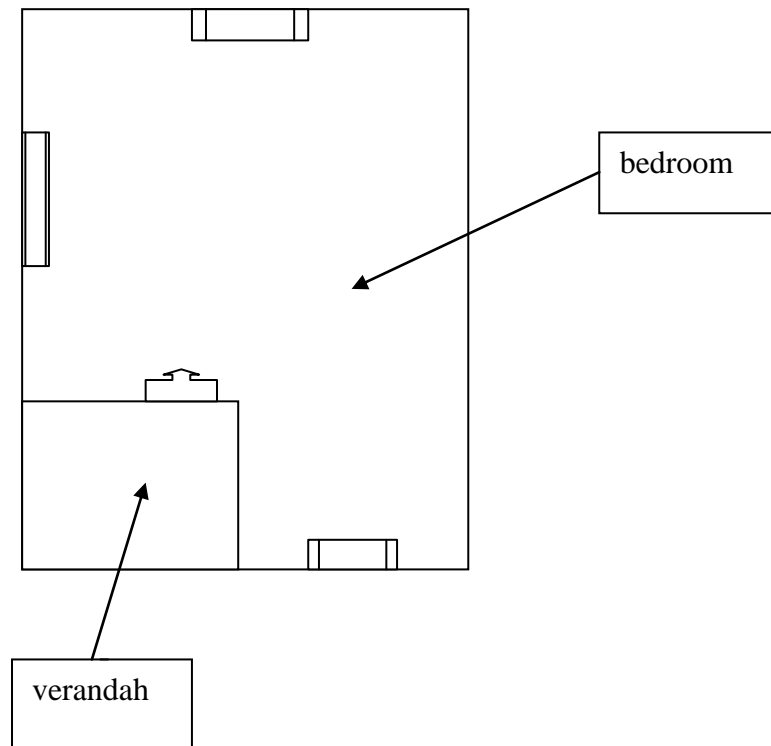
Kitchen/dining area has two fluorescent lights

Each of the four bedrooms has one light globe, one switch and one power point

Each of the four bathrooms has one light globe; switch for bathrooms 2 and 3 is located in the internal open area

Internal open area has one light globe and two switches; plus a skylight (clear fibreglass sheet).

Accommodation for Church Elder (not to scale):



Window 

Door 

Construction materials:

Walls: mud brick

Roof: galvanised iron sheets

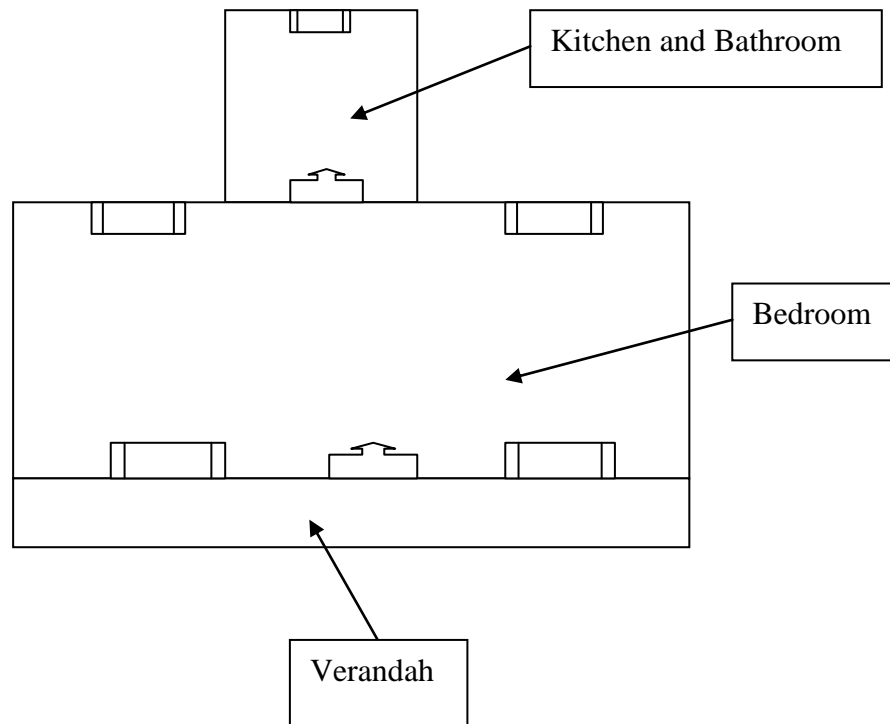
Floor: cement

Dimensions of Accommodation for Church Elder:

Verandah: Length: 3.17m Width: 2.75m

External walls: Length: 6.85m Width: 9.40m

Accommodation for HMP Management Staff (not to scale):



Window 

Door 

Construction materials:

Walls: mud brick

Roof: galvanised iron sheets

Floor: cement

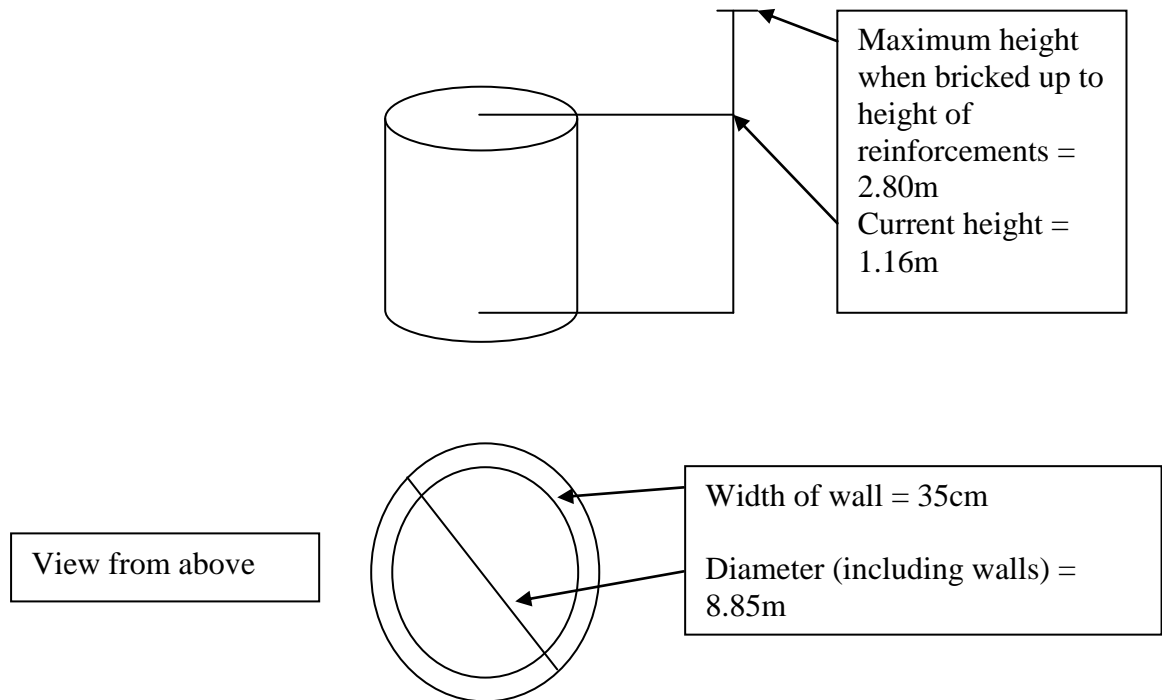
Dimensions of Accommodation for HMP Management Staff:

Verandah: Length: 8.00m Width: 2.00m

Bedroom: Length: 8.00m Width: 4.00m

Kitchen and Bathroom: Length: 2.00m Width: 2.85m

Millet Storage Tank (currently half completed)



Construction materials:

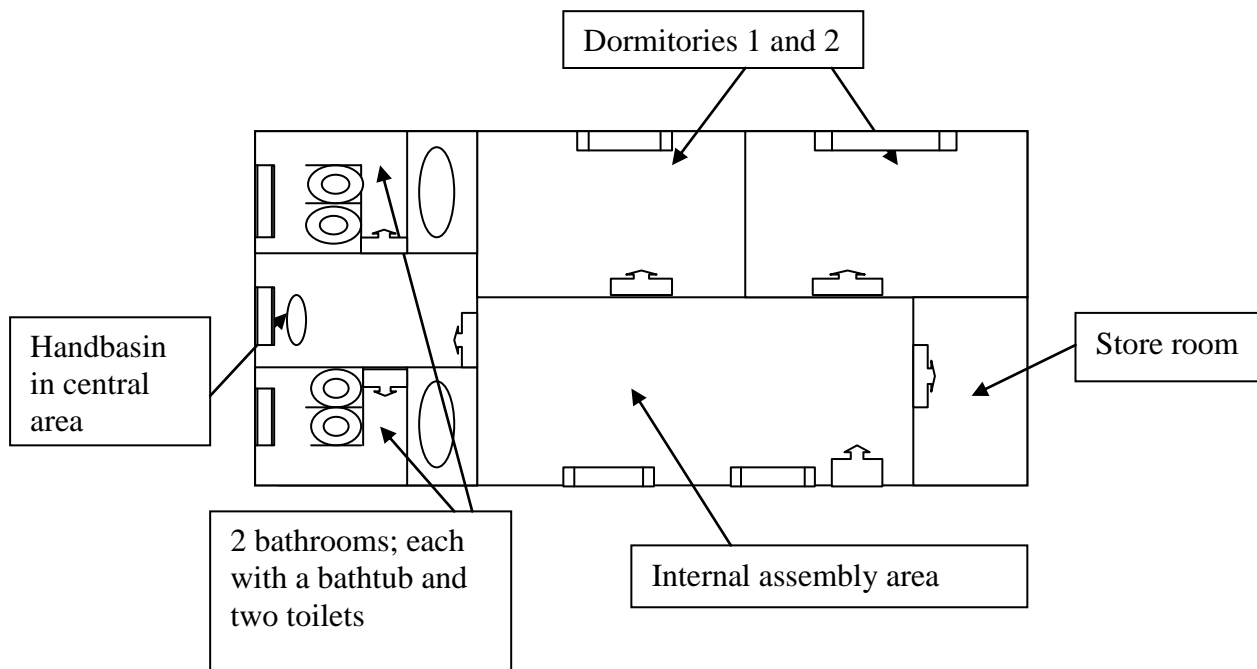
Walls: steel reinforced mud brick

Floor: cement

The tank currently stores Nshima (millet) for use in the community and for sale to neighbouring communities.

If used for water storage, paraffin would be sprayed on top of the surface water to prevent mosquito habitation.

Original Orphanage (not to scale):



Window 

Door 

Construction materials:

Walls: mud brick

Roof: galvanised iron sheets

Floor: cement

Dimensions of Original Orphanage:

External walls: Length: 19.30 m Width: 8.75m

Internal assembly area: Length: 11.40m Width: 3.85m

Dormitory 1: Length: 7.00m Width: 3.75m

Dormitory 2: Length: 6.80m Width: 3.75m

Bathrooms: Length: 2.80m Width: 2.90m

Central handbasin area: Length: 2.90m Width: 1.95m

Store Room: Length: 2.00m Width: 3.85m

Additional information about the Original Orphanage:

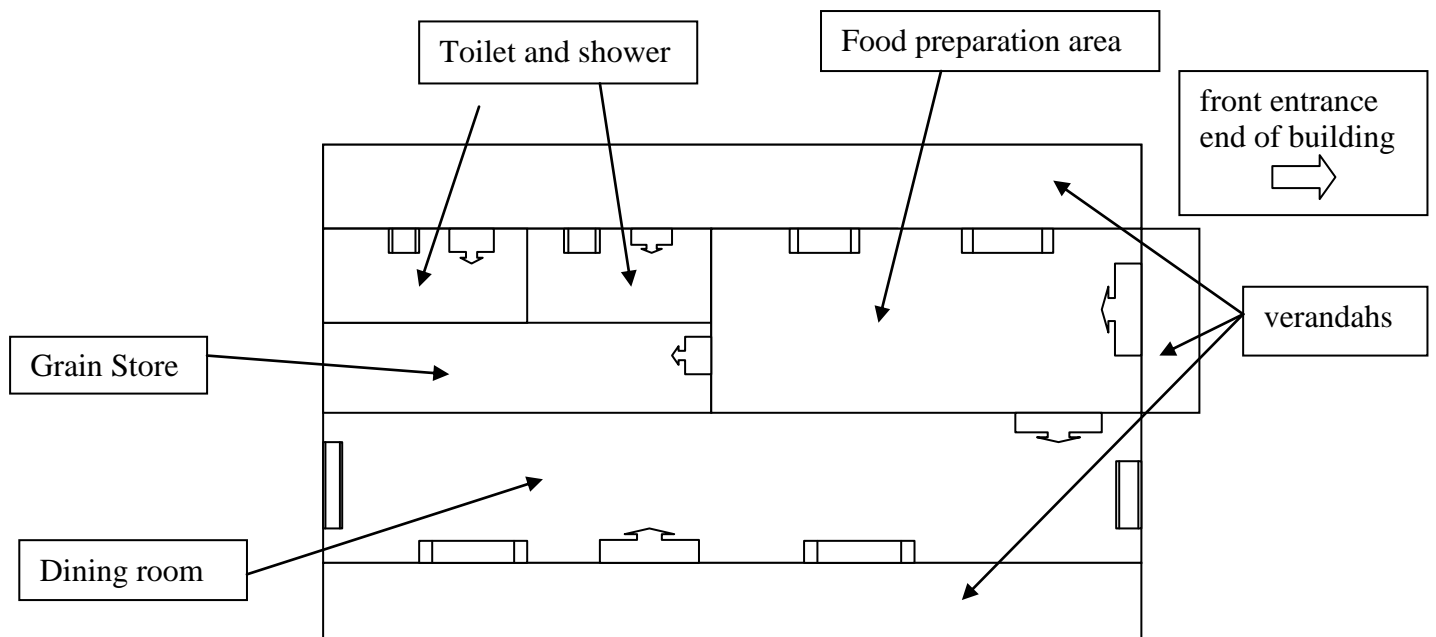
Each dormitory has one light globe and switch.

Each dormitory previously had ten beds, in each of which slept two children,, ie. 40 children were housed in this block.

There is one smoke detector in the Internal Assembly area, which also has two light globes and one power point.

There is one light globe in each bathroom.

Orphans' Dining Room; main kitchen and store area (not to scale):



Window 

Door 

Construction materials:

Walls: mud brick

Roof: galvanised iron sheets

Floor: cement

Dimensions of Orphans' Dining Room; main kitchen and store area:

Verandah (front entrance): Length: 3.00m Width: 8.20m

Verandah adjacent to dining room: Length: 13.80m Width: 1.85m

Verandah adjacent to amenities / food preparation rooms: Length: 13.80m Width: 1.85m

Grain Store: Length: 6.90m Width: 3.60m

Food Preparation area: Length: 6.90m Width: 7.95m

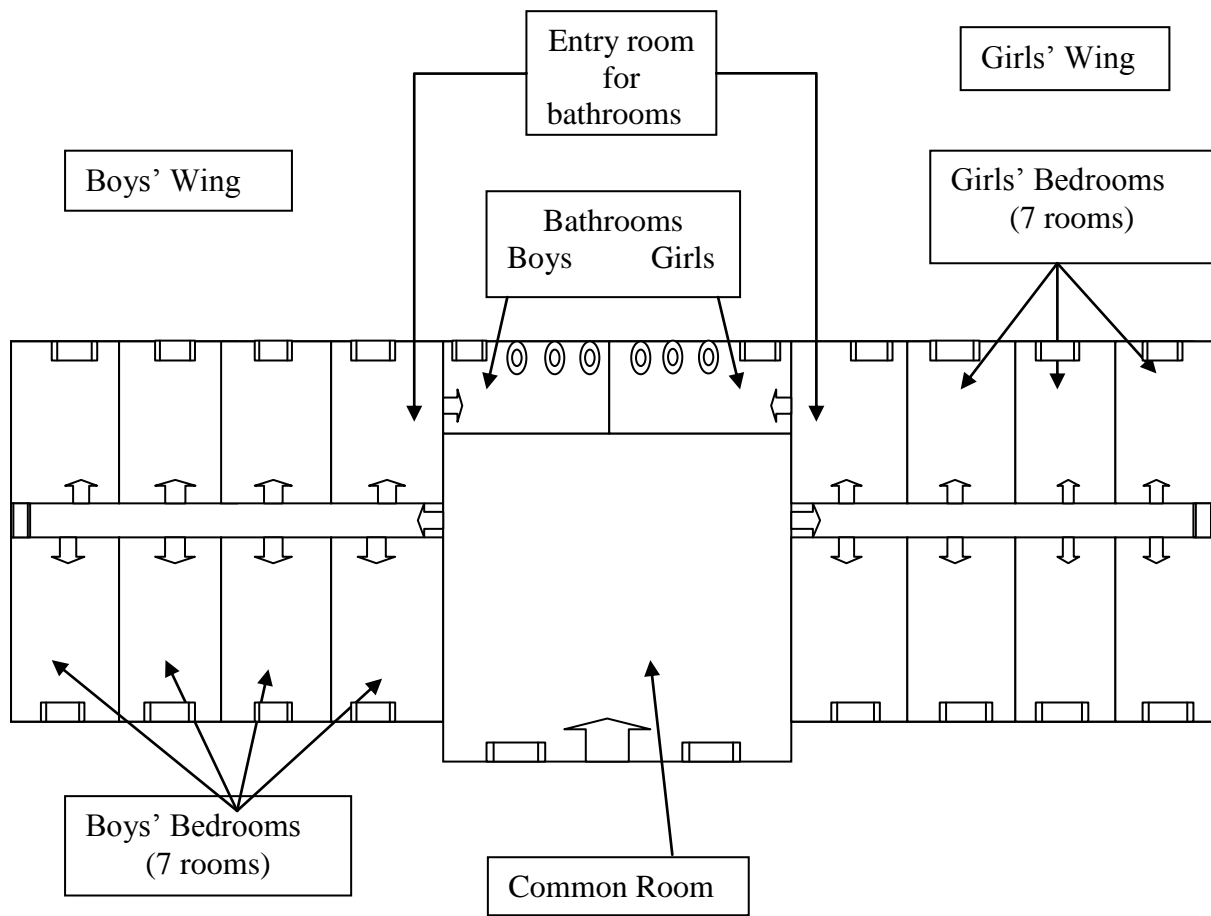
Dining Room: Length: 13.80m Width: 7.70m

External wall (back end of building) excluding verandahs: Length: 20.00m

Additional information about this building:

There are four fluoro lights on the ceiling of the Dining Room and two light switches. There are no power points in the Dining Room.

New Orphanage (not to scale):



Window 

Door 

Construction materials:

Walls: mud brick

Roof: galvanised iron sheets

Floor: cement

Dimensions of New Orphanage:

External walls (rear and front): Length: 41.50m

External walls (sides left and right): Length: 11.90m

Common Room: Length: 16.20m Width: 8.90m

Hallways (Common Room to the end of each wing): Length: 12.45 Width: 1.85m

Bedrooms: Length: 3.10m Width: 5.00m

Bathrooms: Length: 6.60m Width: 2.90m

Additional information about the New Orphanage:

Lights and powerpoints:

There is a light fitting in each bedroom and bathroom (or wiring for a fitting).

There are 3 powerpoints and 3 lights in the Common Room.

There is 1 light fitting in each of the two hallways from the Common Room to the end of each wing

Doors and windows:

Bedrooms:

Each bedroom has an external vent and a door jamb. Measurements of the door jambs are:

Height: 1.95m

Width: 1.40m

There is a door jamb between each bathroom and its corresponding bathroom entry room.

Each bedroom has a window. Measurements of the bedroom windows are:

Height: 0.85m

Width: 1.77m

Common Room:

The Common Room has two windows with the same measurements as the bedroom windows.

There is a double-door at the external entry to the Common Room. This is the only point of entrance to and exit from to the entire building.

Hallways:

There is a window at the end of each hallway.

Measurements of the hallway windows are:

Height: 0.85m

Width: 1.18m

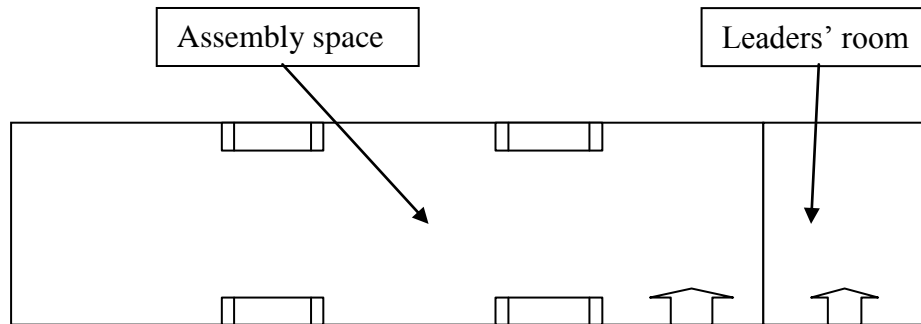
Amenities:

There are three toilets in the bathrooms of each wing; showers are still to be constructed.

Water Supply:

There is a 440litre galvanised iron tank at the rear of the New Orphanage. It will be replaced by a 10,000litre plastic tank. Currently, water is transported in from up to 7 kilometres away on a tractor. Water is pumped into the tank from the transportation vehicle (tractor with a trailer). At present there are no gutters on the building, so rainwater from the roof is not captured. The tank is elevated so that the building is gravity fed. It may be possible to install a solar powered pump in the future to enhance the water pressure from the larger tank.

Church Building and Nursery School (not to scale):



Window 

Door 

Construction materials:

Walls: mud brick

Roof: galvanised iron sheets

Floor: cement

Dimensions of Church Building and Nursery School:

External walls (rear and front): Length: 14.60m

External walls (sides left and right): Length: 4.50m

Assembly space: Length: 11.60m Width: 4.50m

Leaders' room: Length: 3.0m Width: 4.5m

Additional information about the Church Building and Nursery School:

Windows:

There are four glazed windows inside the assembly space. Their dimensions are:

Height: 0.90m Width: 0.65m

Ventilation is also assisted by four vents that are covered by grates.

Doors:

The main entrance to the assembly space has a door which measures as follows:

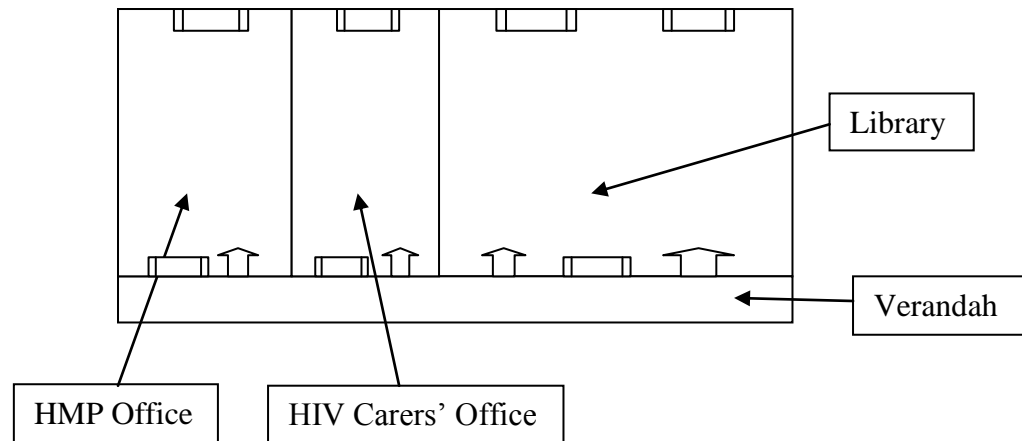
Height: 2.00m Width: 0.90m

The door to the leaders' room measures as follows:

Height: 1.95m Width: 0.90m

The Assembly space has wiring for lights but there are no light fittings at present. There is also one power point.

HMP Office / HIV Carers' Office / Library (not to scale):



Window

Door

Construction materials:

Walls: mud brick

Roof: galvanised iron sheets

Floor: cement

Dimensions of HMP Office / HIV Carers' Office / Library:

External walls (rear and front): Length: 23.0m

External walls (sides left and right): Length: 7.50m (not including verandah)

Verandah: Length: 23.0m Width: 1.65m

HMP Office: Length: 4.70m Width: 7.50m

HIV Carers' Office: Length: 6.70m Width: 7.50m

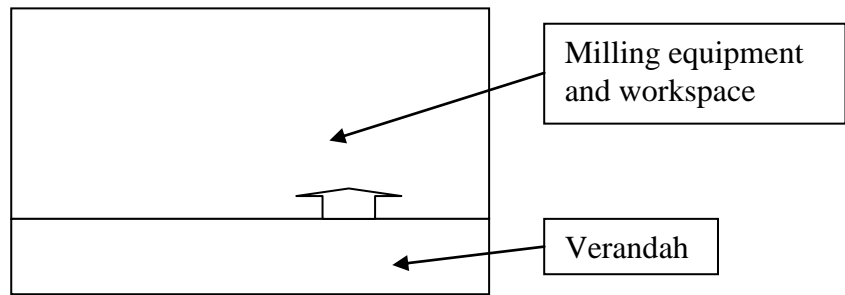
Library: Length: 11.60m Width: 7.50m


Additional information about the HMP Office / HIV Carers' Office / Library:

HIV Carers' Office: There is one light and one powerpoint (currently broken).

Library: There are two light sockets and two lights; no powerpoints

Building housing the Hammermill (not to scale):



Door 

Construction materials:

Walls: security wire mounted on wooden poles (uprights)

Roof: galvanised iron sheets

Floor: cement

Dimensions of the building housing the Hammermill: Length: 5.50m Width: 3.50m

Verandah: Length: 5.50m Width: 2.50m

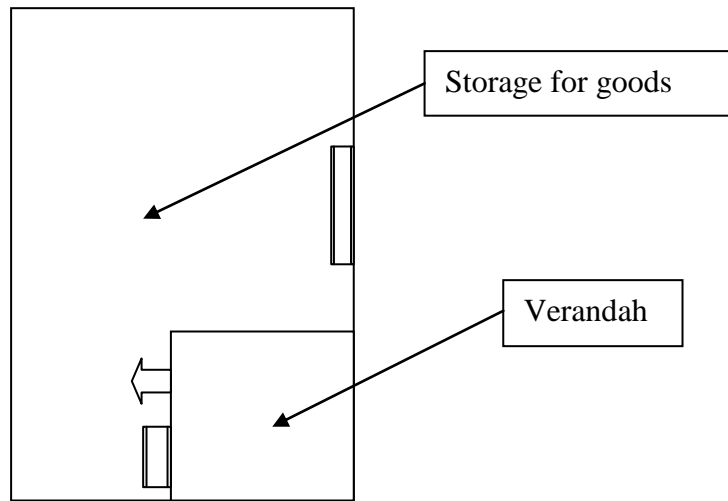
Additional information about the building housing the Hammermill:

The building contains a light globe and light switch.

Maize is transported to the Hammermill either by bicycle or carried (on shoulders) in bags. The building houses a generator-powered mill which grinds the maize into flour. This in turn is used for making Nshima, a staple for the locals' diet. Nshima is a very thick, porridge-like substance which is made when the flour is combined with water and boiled in a pot.

You can see the building and the Hammermill in the Gallery section of the Letting Chibobo Shine website (look under "food").

Shop (not to scale):



Window 

Door 

Construction materials:

Walls: mud brick

Roof: galvanised iron sheets

Floor: cement

Dimensions of the Shop:

Length: 12.50m

Width: 5.0m

Verandah:

Length: 3.60m

Width: 3.60m